



Shire of EAST
Pilbara
AUSTRALIA'S LARGEST SHIRE

SHIRE OF EAST PILBARA OPPORTUNITIES



SHIRE OF EAST PILBARA - OPPORTUNITIES

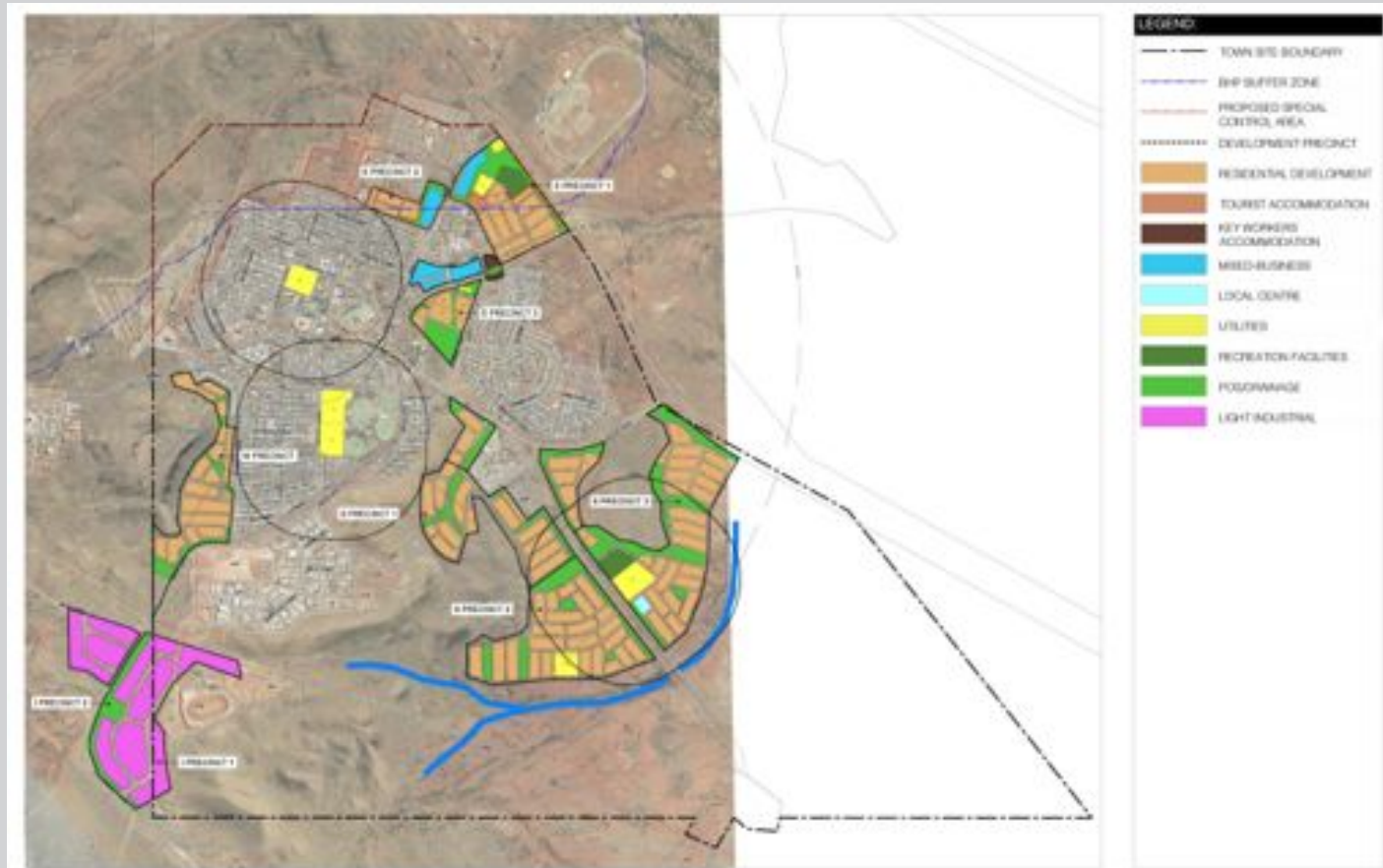
Largest Shire in the Southern Hemisphere

- 372,000 square kilometres
- Largest open cut iron ore mine
- Largest National Park in the state



SHIRE OF EAST PILBARA

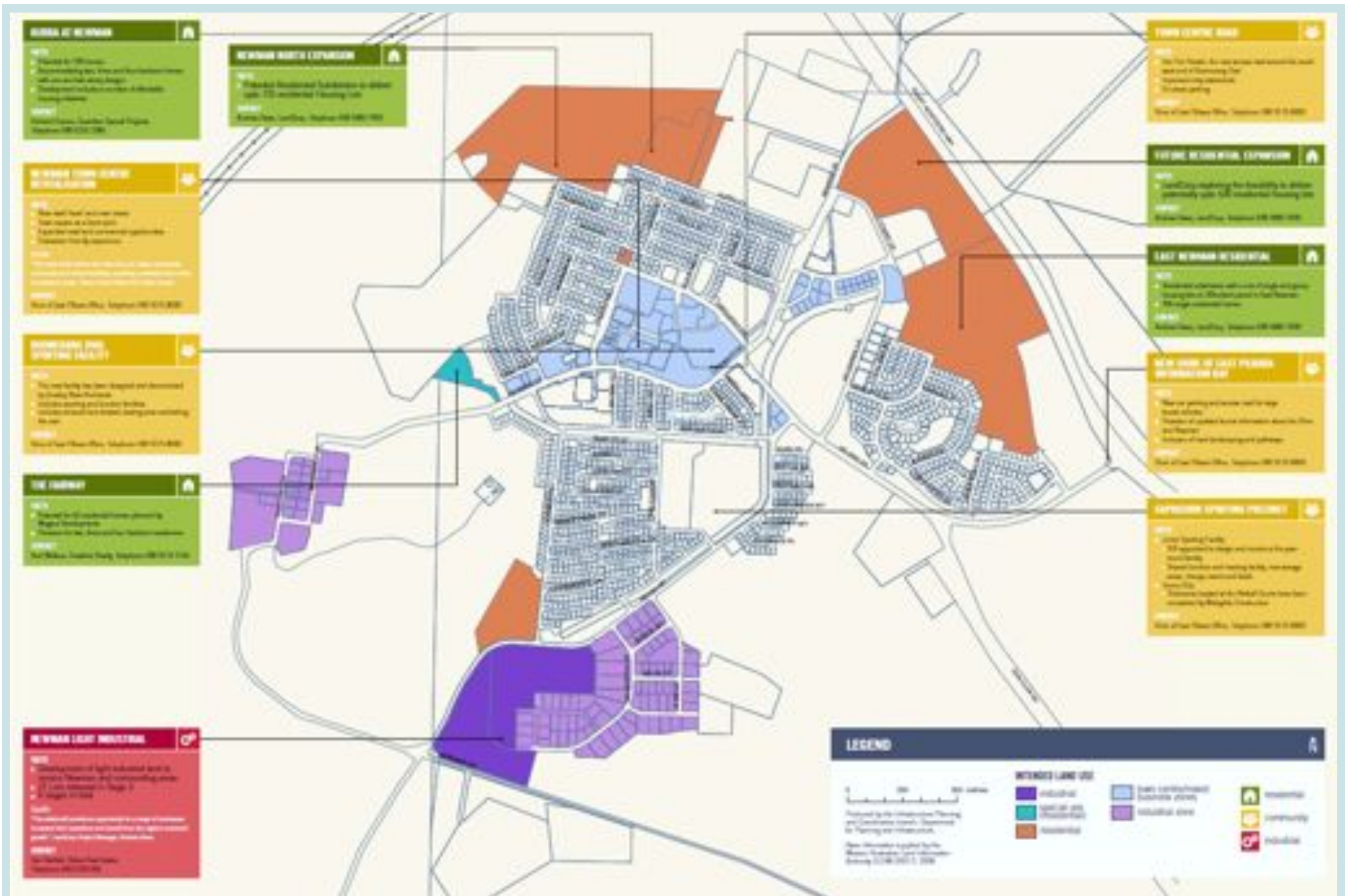
- OPPORTUNITIES
- DEVELOPMENT OF LAND
- AGRICULTURAL POTENTIAL
- TOURISM POTENTIAL



NEWMAN TOWN SITE STRATEGIC PLAN
NEWMAN EXPANSION

Date 07/03/14 DWG NO PA0666 SKP-03 REV 3 SCALE 1:10,000@A1
Liam Perry, Manager Services, East Pilbara Shire, 440-0000
Tel: 08 9428 0000 Fax: 08 9428 7100
www.eppilbara.com.au
Liam Perry, Manager Services, East Pilbara Shire, 440-0000





Newman

Town Centre





LEGEND

- APPLICATION AREA
- ▨ SUBJECT TO SEPARATE ROAD CLOSURE APPLICATION

LOT YIELD BREAKDOWNS	
LOTS SIZE (M ²)	LOT YIELD
<=2000M ²	3
2000M ² - 3000M ²	2
3000M ² - 4000M ²	2
>=4000M ²	6
TOTAL	12

APPLICATION AREA
 TOTAL AREA LOTS 1507-1557: 3.79 hectares
 ARTYCHO WAY ROAD RESERVE: 0.52 hectares
 RUSSELL STREET ROAD RESERVE: 0.61 hectares
 TOTAL SUBDIVISION AREA: 4.71 hectares

RESIDUANT AREAS FOLLOWING SUBDIVISION
 TOTAL LOT AREA (MIXED BUSINESS X 12): 4.08 hectares
 TOTAL INTERNAL ROADS: 0.60 hectares

Mixed Business Opportunities

- Yield 12 lots - ranging in size from 1745 – 4523 m²
- The pre-sales process will begin in April 2014.

SHIRE OF EAST PILBARA

Agriculture

- Cattle
- PHADI

Tourism

- Aboriginal
- Industrial
- Wide open spaces

Allen Cooper
Chief Executive Officer